

TTL Socktoberfest Mystery Sock
Cable Version
Clue #2 – Leg
56 Stitch Cast On

Notes:

The chart is worked from bottom to top, right to left.

The red lines on the chart indicate where the stitches are divided on the needles. For DPN's refer to all of the red lines, for Magic Loop and two circulars refer to only the red lines at the beginning and end of the chart.

The chart repeats twice around the sock.

Begin Leg

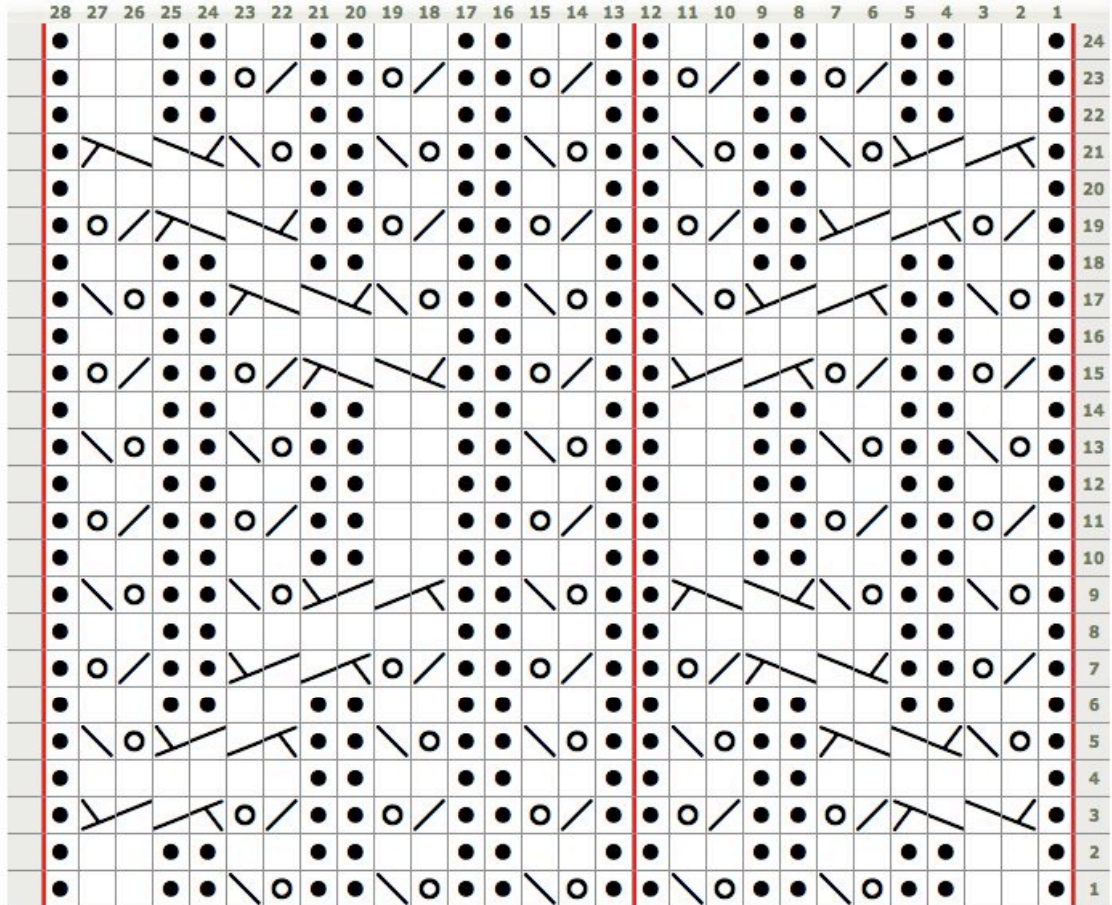
For those who are working on DPN's, rearrange the stitches on the needles as indicated by the red lines on the chart. Do this by transferring the last two stitches from needle 1 onto needle 2 and the last two stitches from needle 3 onto needle 4. There are now 12 stitches on needle 1, 16 stitches on needle 2, 12 stitches on needle 3 and 16 stitches on needle 4.

For those working magic loop or two circulars, you may leave your stitches as they are, with 28 stitches on each needle.

Work rounds 1-24 of the chart once, starting at the bottom of the chart, with round 1. Work rounds 1-12 one more time. The chart repeats twice around the sock.

You are now done with clue #2.

Chart



Legend:

-  **purl**
purl stitch

-  **knit**
knit stitch

-  **yo**
Yarn Over

-  **ssk**
Slip one stitch as if to knit, Slip another stitch as if to knit. Insert left-hand needle into front of these 2

-  **c2 over 2 left**
sl 2 to CN, hold in front. k2, k2 from CN

-  **k2tog**
Knit two stitches together as one stitch

-  **c2 over 2 right**
sl2 to CN, hold in back. k2, k2 from CN

Created in Knit Visualizer (www.knitfoundry.com)